

COMPRESSOR BLEED AIR HEATER - TROUBLESHOOTING

1. General

- A. Troubleshooting of the compressor bleed air heater and/or flow control valve should be performed anytime output flow falls below normal parameters.
- B. Troubleshooting charts have been prepared to aid the maintenance technician in system troubleshooting. Refer to Figure 101 for compressor bleed air troubleshooting diagram. Refer to Figure 102 for flow control valve troubleshooting diagram. Refer to Figure 103 and Figure 104 for cabin heating and windshield defrosting troubleshooting diagrams.

Figure 101 : Sheet 1 : Compressor Bleed Air Heater Troubleshooting Diagram

A10002

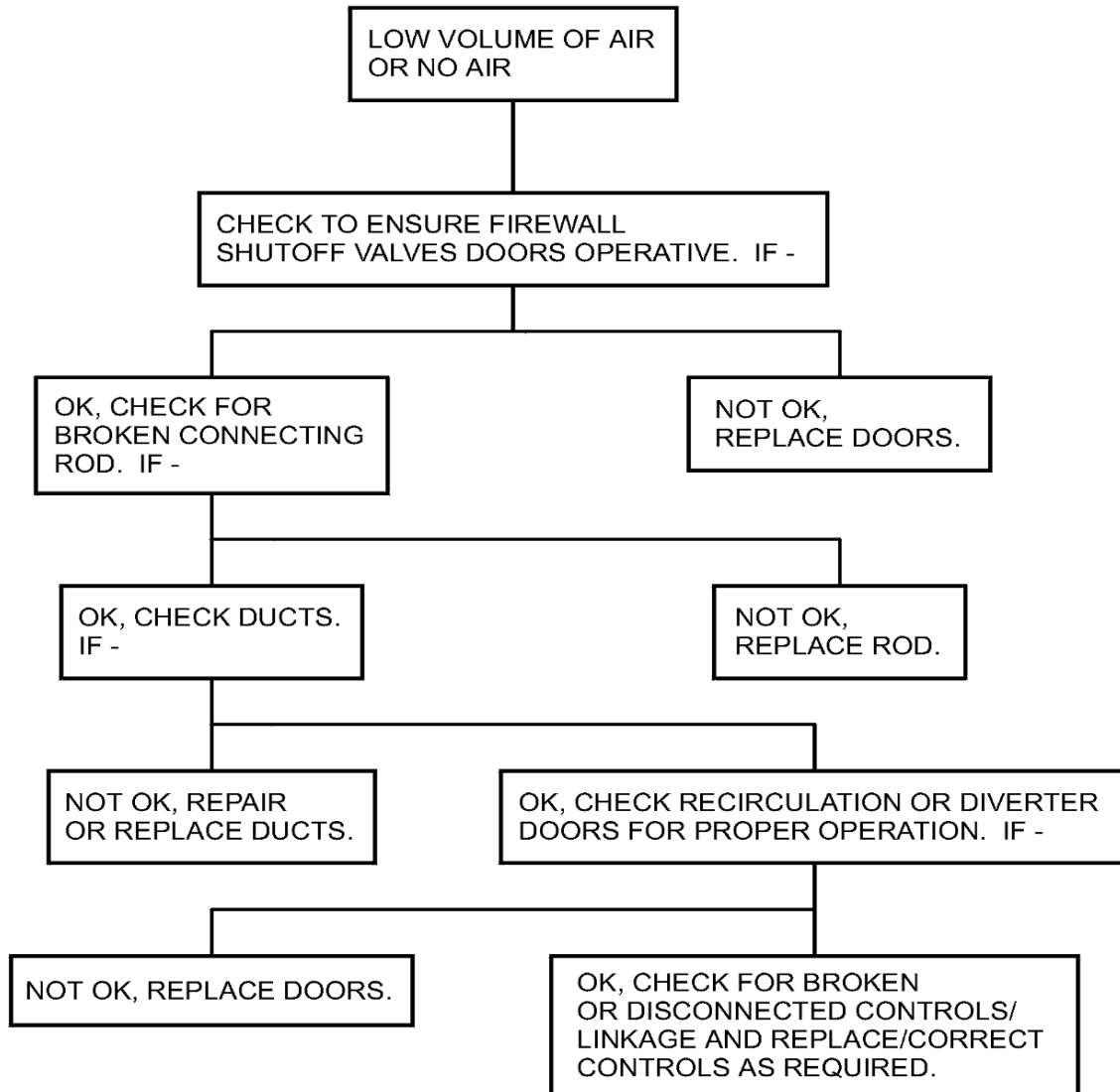


Figure 102 : Sheet 1 : Flow Control Valve Troubleshooting Chart

A10003

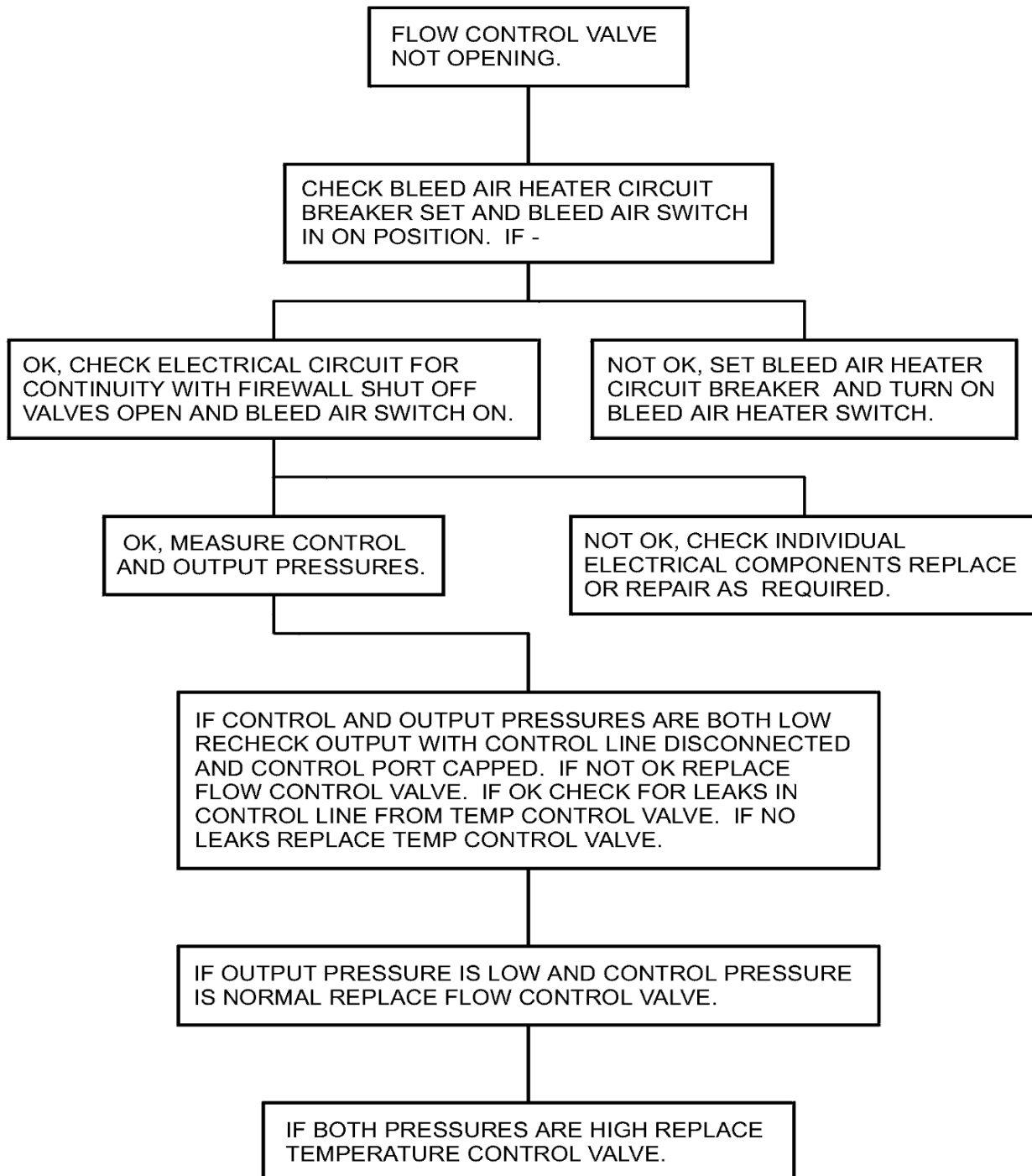
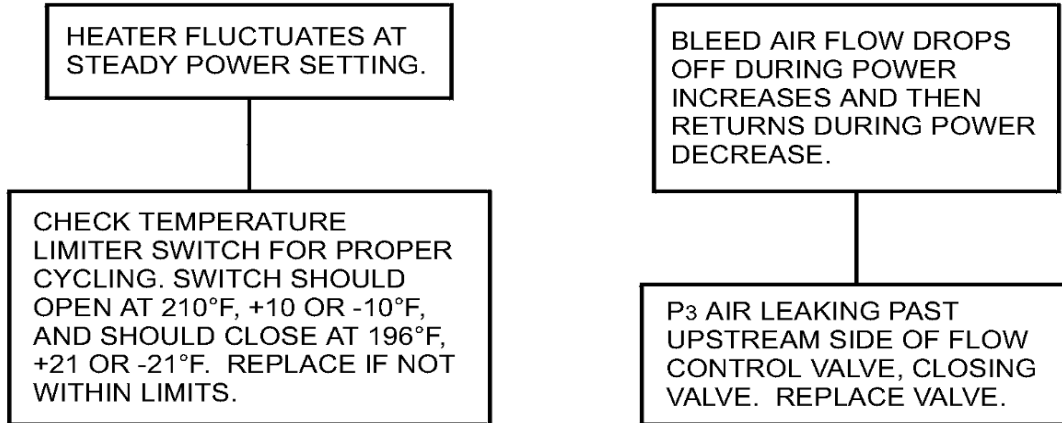


Figure 103 : Sheet 1 : Cabin Heating and Windshield Defrosting Troubleshooting Diagram

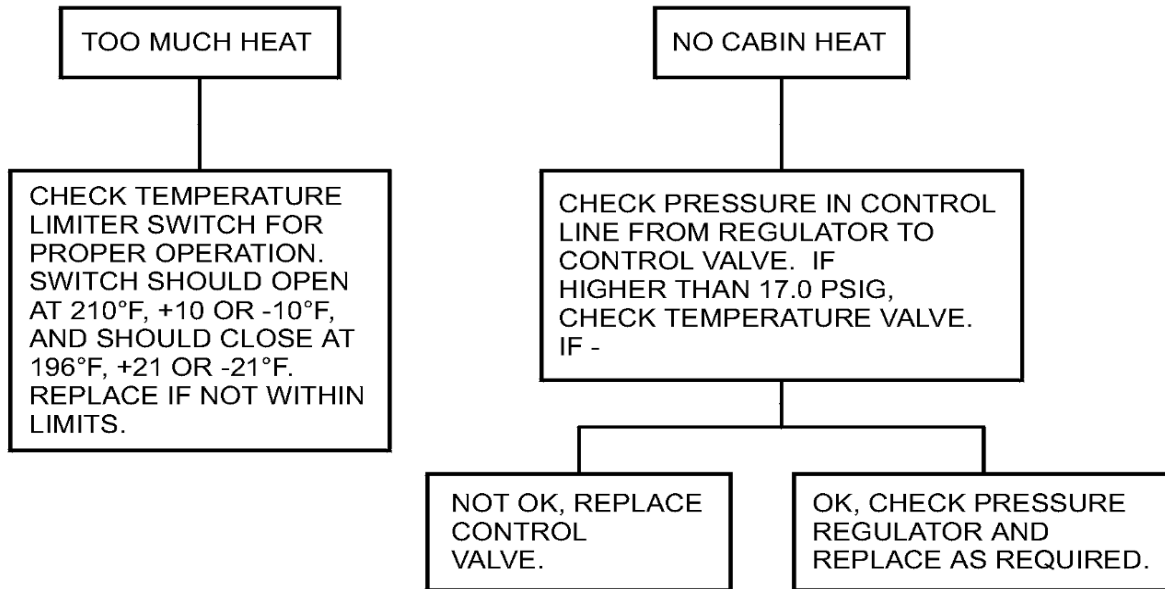
A10004



AIRPLANES 20800001 THRU 20800179
AND 208B0001 THRU 208B0209
EXCEPT AIRPLANES INCORPORATING CAB90-9

Figure 103 : Sheet 2 : Cabin Heating and Windshield Defrosting Troubleshooting Diagram

A10005



AIRPLANES 20800001 THRU 20800179
AND 208B0001 THRU 208B0209
EXCEPT AIRPLANES INCORPORATING CAB90-9

Figure 103 : Sheet 3 : Cabin Heating and Windshield Defrosting Troubleshooting Diagram

A10006

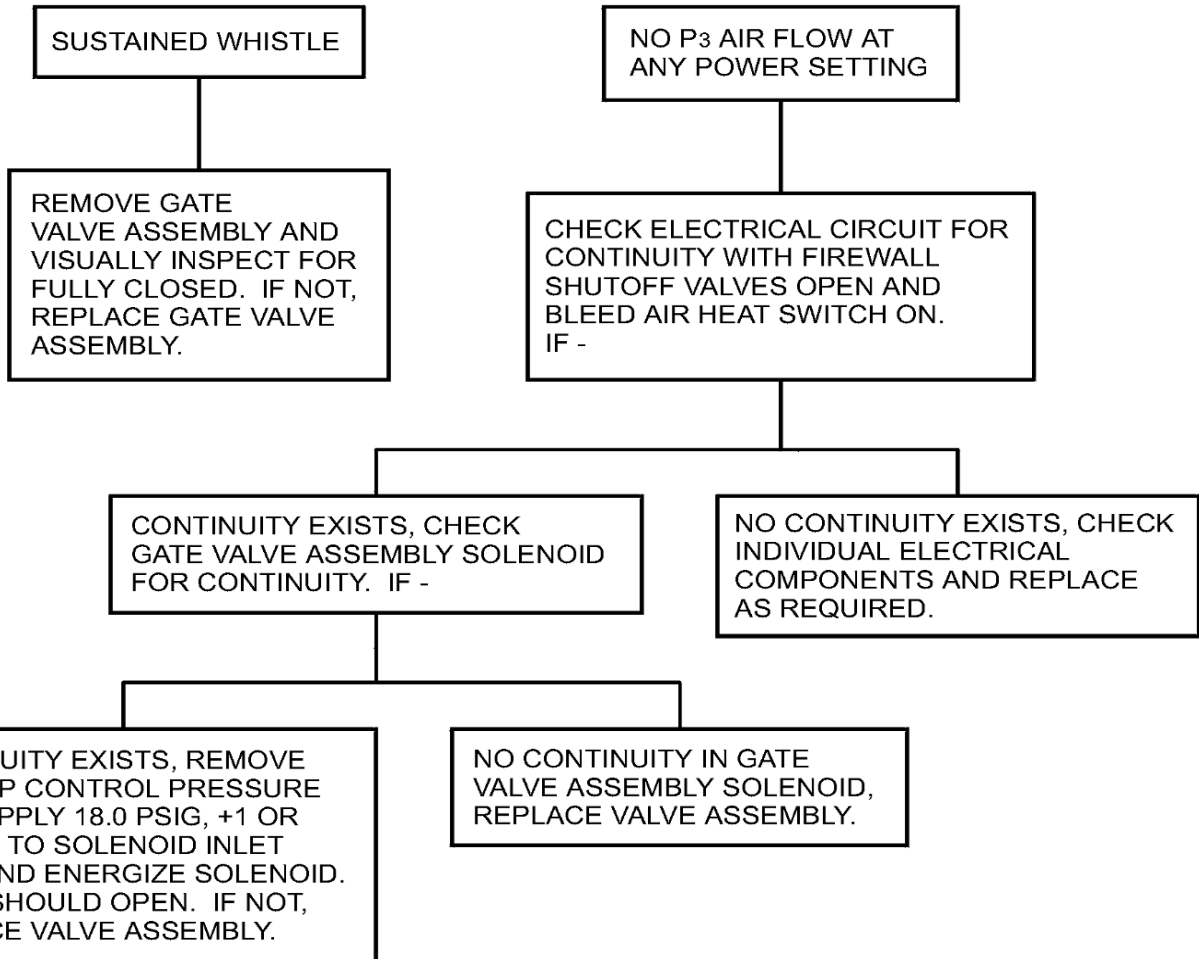
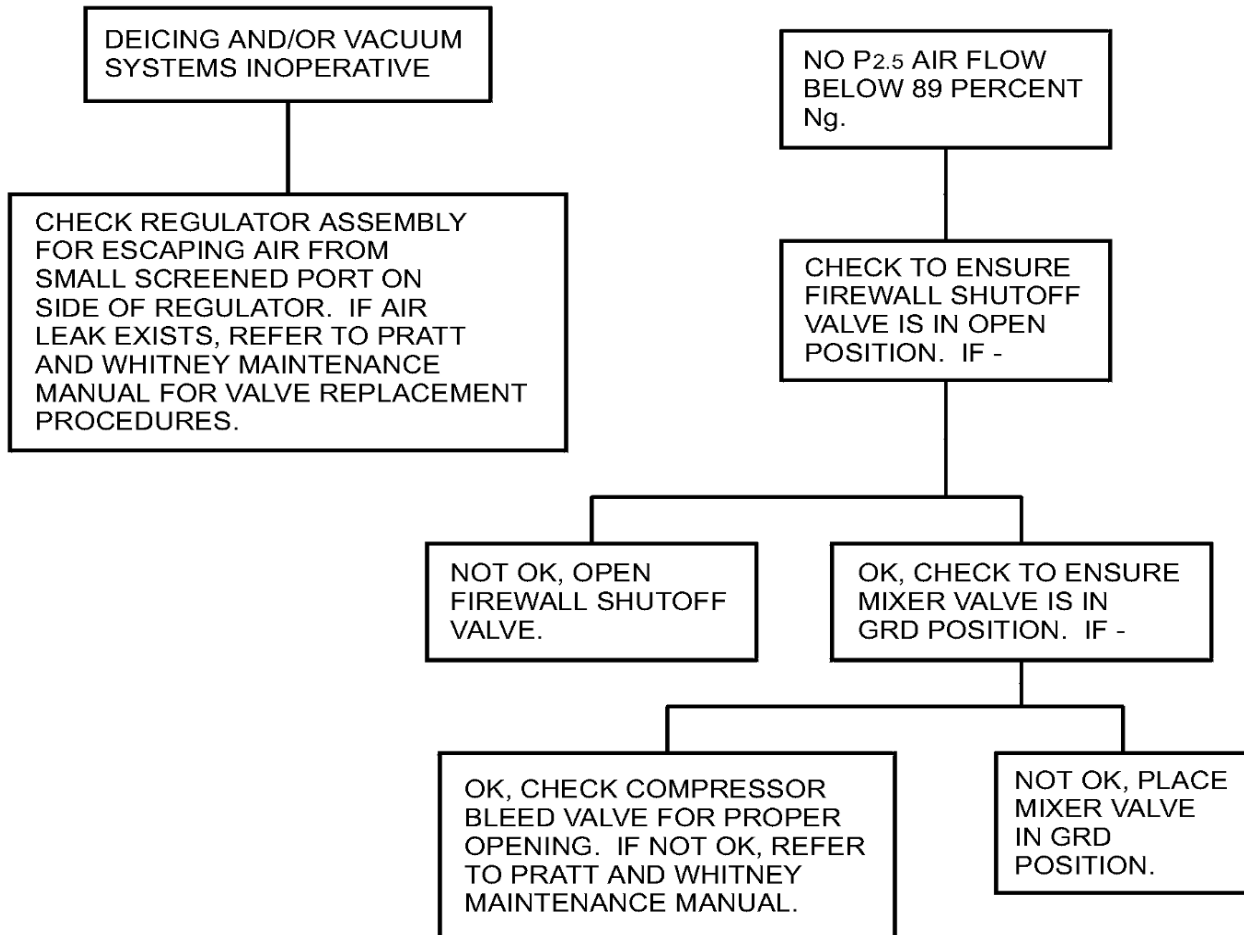


Figure 103 : Sheet 4 : Cabin Heating and Windshield Defrosting Troubleshooting Diagram

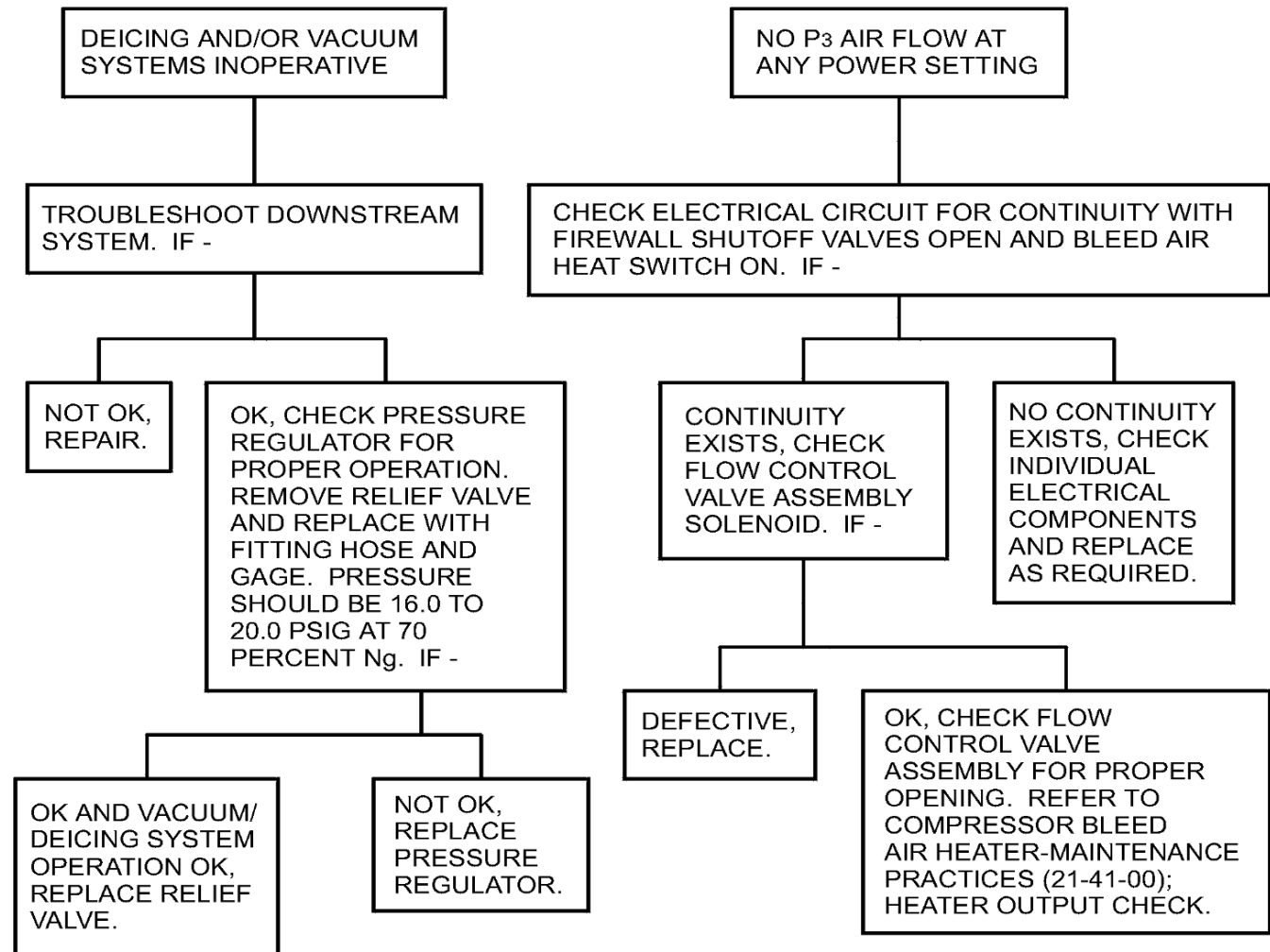
A10007



AIRPLANES 20800001 THRU 20800179
AND 208B0001 THRU 208B0209
EXCEPT AIRPLANES INCORPORATING CAB90-9

Figure 104 : Sheet 1 : Cabin Heating and Windshield Defrosting Troubleshooting Diagram

A10008

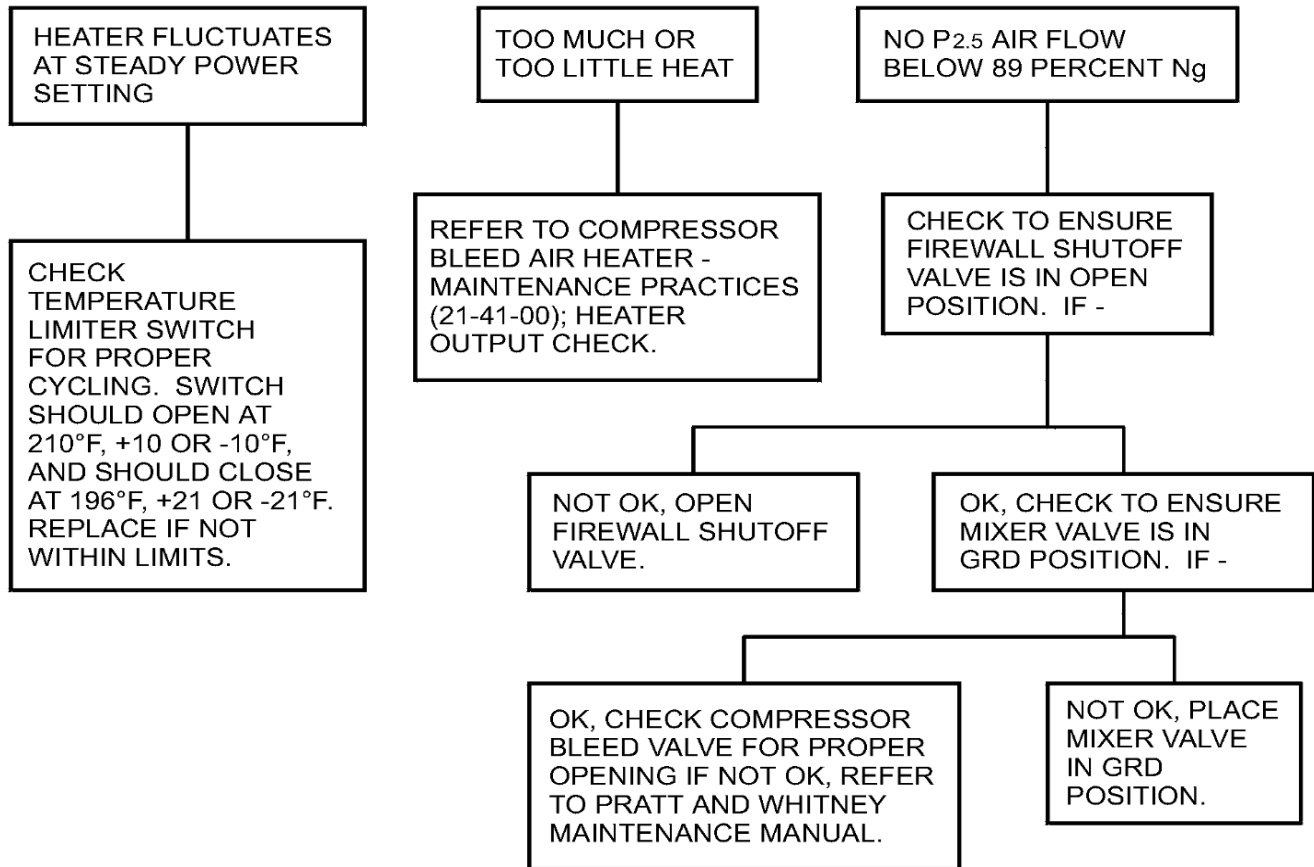


AIRPLANES 20800180 AND ON
AND 20800001 THRU 20800179
INCORPORATING CAB90-9

AIRPLANES 208B210 AND ON
AND 208B0001 THRU 208B0209
INCORPORATING CAB 90-9

Figure 104 : Sheet 2 : Cabin Heating and Windshield Defrosting Troubleshooting Diagram

A10009



AIRPLANES 20800180 AND ON
AND 20800001 THRU 20800179
INCORPORATING CAB90-9

AIRPLANES 208B210 AND ON
AND 208B0001 THRU 208B0209
INCORPORATING CAB 90-9